

Slow Speed Shaft Direction	
Horizontal, slow speed shaft level	H
Vertical, slow speed shaft down	V
Vertical, slow speed shaft up	W
Universal mounting	N

Mounting style	
Foot	H
V flange	V
Flange	F

Type of Input	
Gearmotor	M
With adaptor	JM

Special Specifications	
Standard specification	blank
Special specification	S

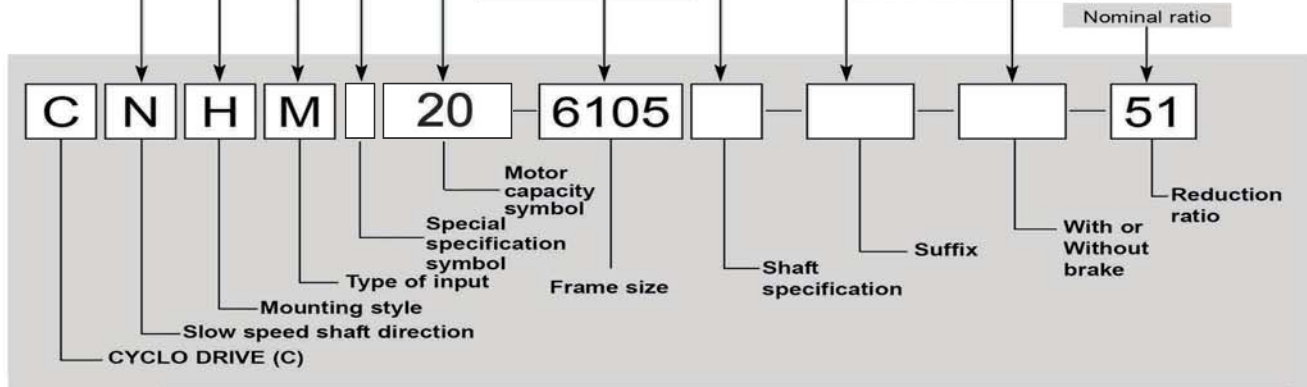
		Motor Capacity Symbol						
4P	Capacity symbol	01	02	03	05	08	1	
	kW (HP)	0.1 (1/8)	0.2 (1/4)	0.25 (1/3)	0.4 (1/2)	0.55 (3/4)	0.75 (1)	
	Capacity symbol	1H	2	3	4	5	8	
	kW (HP)	1.1 (1.5)	1.5 (2)	2.2 (3)	3.0 (4)	3.7 (5)	5.5 (7.5)	
	Capacity symbol	10	15	20	25	30	40	
	kW (HP)	7.5 (10)	11 (15)	15 (20)	18.5 (25)	22 (30)	30 (40)	
6P	Capacity symbol	50	60	75	100			
	kW (HP)	37 (50)	45 (60)	55 (75)	75 (100)			
	Capacity symbol	016	026	036	056	086	16	
	kW (HP)	0.1 (1/8)	0.2 (1/4)	0.25 (1/3)	0.4 (1/2)	0.55 (3/4)	0.75 (1)	
	Capacity symbol	1H6	26	36	46	56	86	
	kW (HP)	1.1 (1.5)	1.5 (2)	2.2 (3)	3.0 (4)	3.7 (5)	5.5 (7.5)	
6P	Capacity symbol	106	156	206	256	306	406	
	kW (HP)	7.5 (10)	11 (15)	15 (20)	18.5 (25)	22 (30)	30 (40)	
	Capacity symbol	506	606	756	1006	1256	1506	
	kW (HP)	37 (50)	45 (60)	55 (75)	75 (100)	90 (125)	110 (150)	
	Capacity symbol	1756						
	kW (HP)	132 (175)						

Shaft specification	
Metric JIS (Standard)	-
Inch size	Y
Metric DIN	G

Suffix		
Standard	-	Low Backlash
Light Heavy Radial	R1	With AF (inverter) motor
High Cap. Brg. Ductile Casing	R2	Servo Motor
Baseplate	BP	DC Motor
HH Type Ceiling	H1	High Efficiency Motor
Modification Left Wall	H2	Torque Limiter
Modification Right Wall	H3	

With or Without Brake	
Without brake	-
With brake	B

Frame size  
(Refer to Selection  
Tables starting from  
page B-13.)

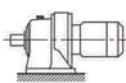


### Product and Nomenclature Symbol Examples (Gearmotor)

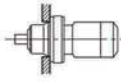
Standard and various application products of CYCLO GEARMOTOR are classified by their nomenclature symbol as below. Refer to specific catalogs or consult us for details on our application products.

### CYCLO® GEARMOTORS

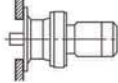
CHHM  
(CNHM)



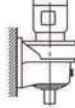
CHFM  
(CNFM)



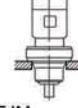
CHVM  
(CNVM)



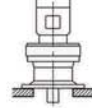
CVHM  
(CNHM)



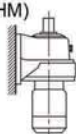
CVFM  
(CNFM)



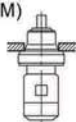
CVVM  
(CNVM)



CWHM  
(CNHM)



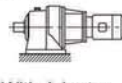
CWFM  
(CNFM)



CWVM  
(CNVM)

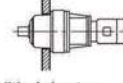


CHHJM  
(CNHJM)



With Adaptor

CHFJM  
(CNFJM)



With Adaptor

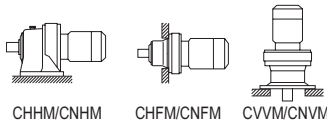
CVVJM  
(CNVJM)



With Adaptor

GEARMOTORS  
How to Select

## Selection Tables Gearmotors #CNHM20, #CHHM20, #CNVM20, #CVVM20



<b>15 kW</b>	Hz		50Hz		60Hz	
	P		4	6	4	6
	n <sub>1</sub>	r/min	1450	980	1750	1165

n<sub>1</sub>: Motor Speed

50Hz					60Hz					Nomenclature			Page of Dimension Sheet				
Output Speed n <sub>2</sub> r/min	Output Torque Tout N·m    kgf·m		Allowable Radial Load Pro N    kgf		SF	Output Speed n <sub>2</sub> r/min	Output Torque Tout N·m    kgf·m		Allowable Radial Load Pro N    kgf		SF	Input Capacity Symbol	Frame Size	Reduction Ratio	CNHM	CNFM	CNVM
															CHHM	CHF	CVVM
242	563	57.4	<b>9200</b>	<b>938</b>	<b>1.01</b>	292	467	47.6	<b>8730</b>	<b>889</b>	<b>1.01</b>	20 -	<b>6145</b>	- 6	<b>B-102</b>	<b>B-118</b>	<b>B-137</b>
			10200	1040	1.35				9670	986	1.35	20 -	6160	- 6	B-103	B-119	B-138
			10200	1040	1.61				9670	986	1.61	20 -	6165	- 6	B-103	B-119	B-138
			11600	1180	1.84				10900	1110	1.84	20 -	6170	- 6	B-103	B-119	B-138
			11600	1180	2.01				10900	1110	2.01	20 -	6175	- 6	B-103	B-119	B-138
181	751	76.5	<b>10200</b>	<b>1040</b>	<b>1.01</b>	219	622	63.4	<b>9660</b>	<b>984</b>	<b>1.01</b>	20 -	<b>6145</b>	- 8	<b>B-102</b>	<b>B-118</b>	<b>B-137</b>
			11400	1170	1.31				10800	1100	1.31	20 -	6160	- 8	B-103	B-119	B-138
			11400	1170	1.61				10800	1100	1.61	20 -	6165	- 8	B-103	B-119	B-138
			12800	1310	1.84				12100	1230	1.84	20 -	6170	- 8	B-103	B-119	B-138
			12800	1310	2.01				12100	1230	2.01	20 -	6175	- 8	B-103	B-119	B-138
132	1030	105	<b>11400</b>	<b>1160</b>	<b>1.01</b>	159	855	87.2	<b>10800</b>	<b>1100</b>	<b>1.01</b>	20 -	<b>6145</b>	- 11	<b>B-102</b>	<b>B-118</b>	<b>B-137</b>
			12900	1320	1.31				12200	1240	1.31	20 -	6160	- 11	B-103	B-119	B-138
			12900	1320	1.61				12200	1240	1.61	20 -	6165	- 11	B-103	B-119	B-138
			14700	1500	1.84				13900	1420	1.84	20 -	6170	- 11	B-103	B-119	B-138
			14700	1500	2.01				13900	1420	2.01	20 -	6175	- 11	B-103	B-119	B-138
			19600	2000	2.35				18500	1880	2.35	20 -	6180	- 11	B-104	B-120	B-139
			19600	2000	2.60				18500	1880	2.60	20 -	6185	- 11	B-104	B-120	B-139
27500	2800	2.73	25800	2630	2.73	20 -	6190	- 11	B-104	B-120	B-139						
112	1220	124	<b>11600</b>	<b>1190</b>	<b>1.01</b>	135	1010	103	<b>11000</b>	<b>1130</b>	<b>1.01</b>	20 -	<b>6145</b>	- 13	<b>B-102</b>	<b>B-118</b>	<b>B-137</b>
			13500	1370	1.31				12700	1300	1.31	20 -	6160	- 13	B-103	B-119	B-138
			13500	1370	1.51				12700	1300	1.51	20 -	6165	- 13	B-103	B-119	B-138
			15300	1560	1.82				14500	1470	1.82	20 -	6170	- 13	B-103	B-119	B-138
			15300	1560	2.01				14500	1470	2.01	20 -	6175	- 13	B-103	B-119	B-138
			20400	2080	2.35				19200	1960	2.35	20 -	6180	- 13	B-104	B-120	B-139
			20400	2080	2.60				19200	1960	2.60	20 -	6185	- 13	B-104	B-120	B-139
28600	2910	2.73	26900	2740	2.73	20 -	6190	- 13	B-104	B-120	B-139						
96.7	1410	144	12100	1240	0.97	117	1170	119	11500	1170	1.01	20 -	6145	- 15	B-102	B-118	B-137
			<b>14200</b>	<b>1450</b>	<b>1.25</b>				<b>13500</b>	<b>1370</b>	<b>1.25</b>	20 -	<b>6160</b>	- 15	<b>B-103</b>	<b>B-119</b>	<b>B-138</b>
			14200	1450	1.49				13500	1370	1.51	20 -	6165	- 15	B-103	B-119	B-138
			16100	1640	1.70				15200	1550	1.70	20 -	6170	- 15	B-103	B-119	B-138
			16100	1640	2.01				15200	1550	2.01	20 -	6175	- 15	B-103	B-119	B-138
			21600	2200	2.16				20300	2070	2.16	20 -	6180	- 15	B-104	B-120	B-139
			21600	2200	2.60				20300	2070	2.60	20 -	6185	- 15	B-104	B-120	B-139
30000	3060	2.73	28200	2880	2.73	20 -	6190	- 15	B-104	B-120	B-139						
85.3	1600	163	12600	1290	0.80	103	1320	135	12000	1220	0.80	20 -	6145	- 17	B-102	B-118	B-137
			<b>14600</b>	<b>1490</b>	<b>1.25</b>				<b>13900</b>	<b>1410</b>	<b>1.25</b>	20 -	<b>6165</b>	- 17	<b>B-103</b>	<b>B-119</b>	<b>B-138</b>
			16700	1700	1.31				15800	1610	1.31	20 -	6170	- 17	B-103	B-119	B-138
			16700	1700	1.61				15800	1610	1.61	20 -	6175	- 17	B-103	B-119	B-138
			22700	2320	2.04				21400	2180	2.04	20 -	6180	- 17	B-104	B-120	B-139
22700	2320	2.55	21400	2180	2.60	20 -	6185	- 17	B-104	B-120	B-139						
31600	3220	2.73	29800	3030	2.73	20 -	6190	- 17	B-104	B-120	B-139						
69.0	1970	201	<b>15600</b>	<b>1590</b>	<b>1.07</b>	83.3	1630	166	<b>14800</b>	<b>1510</b>	<b>1.07</b>	20 -	<b>6165</b>	- 21	<b>B-103</b>	<b>B-119</b>	<b>B-138</b>
			17900	1830	1.24				17000	1730	1.30	20 -	6170	- 21	B-103	B-119	B-138
			17900	1830	1.57				17000	1730	1.61	20 -	6175	- 21	B-103	B-119	B-138
			24300	2480	2.00				22900	2340	2.00	20 -	6180	- 21	B-104	B-120	B-139
			24300	2480	2.54				22900	2340	2.60	20 -	6185	- 21	B-104	B-120	B-139
34000	3470	2.73	32000	3260	2.73	20 -	6190	- 21	B-104	B-120	B-139						
58.0	2350	239	16200	1650	0.89	70.0	1940	198	15400	1570	1.01	20 -	6165	- 25	B-103	B-119	B-138
			<b>18500</b>	<b>1890</b>	<b>1.04</b>				<b>17500</b>	<b>1780</b>	<b>1.05</b>	20 -	<b>6170</b>	- 25	<b>B-103</b>	<b>B-119</b>	<b>B-138</b>
			18500	1890	1.30				17500	1780	1.30	20 -	6175	- 25	B-103	B-119	B-138
			25300	2580	1.61				23800	2430	1.61	20 -	6180	- 25	B-104	B-120	B-139
			25300	2580	2.01				23800	2430	2.01	20 -	6185	- 25	B-104	B-120	B-139
			35600	3620	2.35				33500	3410	2.35	20 -	6190	- 25	B-104	B-120	B-139
35600	3620	2.70	33500	3410	2.70	20 -	6195	- 25	B-104	B-120	B-139						

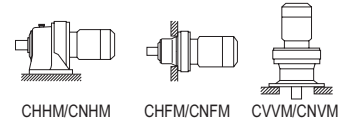
GEARMOTORS

Selection Tables  
15 kW

- "\*2" indicate models manufactured with reducer and motor separately mounted on a common baseplate (horizontal shaft direction) or on an adaptor (vertical shaft direction). Consult us for details, including dimensions.
- Allowable radial load (Pro) is the value at the midpoint of the slow speed shaft.
- "\*3" indicate models with reduction ratios equal to nominal ratio. Refer to Table A-3 "6000SK Series (Actual Reduction Ratio)" on page A-4 for actual reduction ratio. Indicated reduction ratio is the same as actual reduction ratio for other models.
- Maintain torque load during operation within "Output torque" in the table for models with "\*" in the SF column. They cannot be operated with 100% motor rating.

# Selection Tables Gearmotors #CNHM20, #CHHM20, #CNVM20, #CVVM20

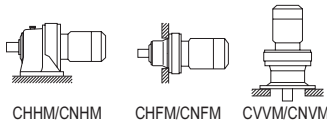
15 kW	Hz		50Hz		60Hz	
	P		4	6	4	6
	n <sub>1</sub>	r/min	1450	980	1750	1165



50Hz					60Hz					Nomenclature			Page of Dimension Sheet				
Output Speed n <sub>2</sub>	Output Torque Tout	Allowable Radial Load Pro		SF	Output Speed n <sub>2</sub>	Output Torque Tout	Allowable Radial Load Pro		SF	Input Capacity Symbol	Frame Size	Reduction Ratio	CNHM	CNFM	CNVM		
r/min	N·m	kgf·m	N	kgf	r/min	N·m	kgf·m	N	kgf				CHHM	CHFM	CVVM		
50.0	2720	277	<b>19400</b>	<b>1980</b>	<b>1.16</b>	60.3	2260	230	<b>18400</b>	<b>1870</b>	<b>1.25</b>	20 - 6175	- 29	<b>B-103</b>	<b>B-119</b>	<b>B-138</b>	
			26400	2690	1.30				24900	2540	1.30	20 - 6180	- 29	B-104	B-120	B-139	
			26400	2690	1.61				24900	2540	1.61	20 - 6185	- 29	B-104	B-120	B-139	
			37400	3810	2.05				35200	3580	2.05	20 - 6190	- 29	B-104	B-120	B-139	
			37400	3810	2.52				35200	3580	2.52	20 - 6195	- 29	B-104	B-120	B-139	
41.4	3280	335	20400	2080	0.96	50.0	2720	277	19400	1970	1.01	20 - 6175	- 35	B-103	B-119	B-138	
			<b>28100</b>	<b>2860</b>	<b>1.23</b>				<b>26500</b>	<b>2700</b>	<b>1.25</b>	20 - 6180	- 35	<b>B-104</b>	<b>B-120</b>	<b>B-139</b>	
			28100	2860	1.51				26500	2700	1.51	20 - 6185	- 35	B-104	B-120	B-139	
			39400	4020	1.62				37100	3780	1.62	20 - 6190	- 35	B-104	B-120	B-139	
			39400	4020	2.01				37100	3780	2.01	20 - 6195	- 35	B-104	B-120	B-139	
33.7	4040	411	<b>29900</b>	<b>3050</b>	<b>1.01</b>	40.7	3340	341	<b>28300</b>	<b>2880</b>	<b>1.01</b>	20 - 6180	- 43	<b>B-104</b>	<b>B-120</b>	<b>B-139</b>	
			29900	3050	1.24				28300	2880	1.25	20 - 6185	- 43	B-104	B-120	B-139	
			42300	4310	1.39				39900	4060	1.39	20 - 6190	- 43	B-104	B-120	B-139	
			42300	4310	1.81				39900	4060	2.01	20 - 6195	- 43	B-104	B-120	B-139	
			77500	7900	2.12				73300	7480	2.12	20 - 6205	- 43	B-105	B-121	B-140	
28.4	4790	488	<b>30900</b>	<b>3150</b>	<b>1.01</b>	34.3	3970	404	<b>29200</b>	<b>2980</b>	<b>1.01</b>	20 - 6185	- 51	<b>B-104</b>	<b>B-120</b>	<b>B-139</b>	
			44100	4490	1.21				41500	4230	1.21	20 - 6190	- 51	B-104	B-120	B-139	
			44100	4490	1.39				41500	4230	1.39	20 - 6195	- 51	B-104	B-120	B-139	
24.6	5540	564	32100	3270	0.80	29.7	4590	468	30400	3100	0.80	20 - 6185	- 59	B-104	B-120	B-139	
			<b>46000</b>	<b>4690</b>	<b>1.02</b>				<b>43400</b>	<b>4430</b>	<b>1.02</b>	20 - 6190	- 59	<b>B-104</b>	<b>B-120</b>	<b>B-139</b>	
			46000	4690	1.25				43400	4430	1.25	20 - 6195	- 59	B-104	B-120	B-139	
			84100	8570	1.51				79700	8120	1.51	20 - 6205	- 59	B-105	B-121	B-140	
			85900	8760	2.26				81300	8290	2.51	20 - 6215	- 59	B-105	B-121	B-140	
20.4	6660	679	<b>48600</b>	<b>4960</b>	<b>1.04</b>	24.6	5520	563	<b>45900</b>	<b>4680</b>	<b>1.04</b>	20 - 6195	- 71	<b>B-104</b>	<b>B-120</b>	<b>B-139</b>	
16.7	8170	832	52100	5310	0.91	20.1	6770	690	49200	5010	0.91	20 - 6195	- 87	B-104	B-120	B-139	
			<b>84100</b>	<b>8570</b>	<b>1.06</b>				<b>84100</b>	<b>8570</b>	<b>1.06</b>	20 - 6205	- 87	<b>B-105</b>	<b>B-121</b>	<b>B-140</b>	
			96100	9790	1.31				91000	9280	1.43	20 - 6215	- 87	B-105	B-121	B-140	
			102000	10400	1.78				96400	9830	1.78	20 - 6225	- 87*2	B-106	B-122	B-141	
16.6	8190	835	84100	8570	1.13	19.7	6890	703	84100	8570	1.30	206 - 6205	- 59	B-105	B-121	B-140	
			96200	9800	1.55				91500	9330	1.83	206 - 6215	- 59	B-105	B-121	B-140	
			102000	10400	1.94				97000	9890	2.22	206 - 6225	- 59	B-106	B-122	B-141	
13.9	6380	650	55800	5690	*1	16.8	6090	621	52400	5340	*1	20 - 6190DB	- 104	B-112	B-128	B-147	
	7350	750	55400	5650	*1		6090	621	52400	5340	*1	20 - 6195DB	- 104	B-112	B-128	B-147	
	9250	943	54700	5580	0.80		7660	781	51800	5280	0.80	20 - 6195DB	- 104	B-112	B-128	B-147	
12.0	10800	1100	7580	773	59000	6010	*1	7090	723	55700	5680	*1	20 - 6195DB	- 121	B-112	B-128	B-147
			8560	872	84100	8570	*1	7090	723	84100	8570	*1	20 - 6205DB	- 121	B-112	B-129	B-148
			84100	8570	0.80	84100	8570	0.80	20 - 6205DB	- 121	B-112	B-129	B-148				
			<b>104000</b>	<b>10600</b>	<b>1.06</b>	<b>101000</b>	<b>10300</b>	<b>1.28</b>	20 - 6215DB	- 121	<b>B-113</b>	<b>B-129</b>	<b>B-149</b>				
			113000	11600	1.25	108000	11000	1.51	20 - 6225DB	- 121	B-113	B-130	B-149				
			142000	14500	1.69	135000	13800	1.69	20 - 6235DA	- 121	B-114	B-114	B-150				
			142000	14500	1.74	135000	13800	2.10	20 - 6235DB	- 121	B-114	B-114	B-150				
			159000	16200	1.91	150000	15300	2.30	20 - 6245DB	- 121	B-114	B-114	B-150				
			194000	19800	2.12	184000	18700	2.12	20 - 6255DA	- 121	B-115	B-132	B-151				
			194000	19800	2.56	184000	18700	3.08	20 - 6255DB	- 121	B-115	B-132	B-151				
237000	24200	2.91	225000	22900	3.38	20 - 6265DA	- 121	B-115	B-132	B-151							
11.3	12100	1230	114000	11600	1.25	13.4	10200	1040	108000	11000	1.48	206 - 6225	- 87	B-106	B-122	B-141	
			142000	14500	1.42				135000	13800	1.60	206 - 6235	- 87	B-106	B-122	B-141	
			159000	16200	1.87				151000	15400	2.14	206 - 6245	- 87	B-107	B-123	B-142	
			196000	19900	2.57				186000	19000	2.86	206 - 6255	- 87	B-107	B-123	B-142	

1. Combinations in **bold** are the recommended models for operations for 10 hours/day with uniform load (service factor is about 1.0 for motor rating at 50Hz).
2. Motor slippage may affect n<sub>1</sub> and n<sub>2</sub>. Refer to technical data for details.
3. CNHM, CHHM, CNFM, CHFM, CNVM, and CVVM indicate types. Refer to page B-10 for details.
4. Lubrication method is different for each model. Refer to "Lubrication" section in page F-4~F-5 for details.
5. "6" at the end of "input capacity symbol" indicates models with 6P motor. Other models come with 4P motor.

# Selection Tables Gearmotors #CNHM20, #CHHM20, #CNVM20, #CVVM20



15 kW	Hz		50Hz		60Hz	
	P		4	6	4	6
	n <sub>1</sub>	r/min	1450	980	1750	1165

n<sub>1</sub>: Motor Speed

50Hz					60Hz					Nomenclature			Page of Dimension Sheet				
Output Speed n <sub>2</sub> r/min	Output Torque Tout		Allowable Radial Load Pro		SF	Output Speed n <sub>2</sub> r/min	Output Torque Tout		Allowable Radial Load Pro		SF	Input Capacity Symbol	Frame Size	Reduction Ratio	CNHM CHHM	CNFM CHFM	CNVM CVVM
	N-m	kgf-m	N	kgf			N-m	kgf-m	N	kgf							
8.79	9270	945	84100	8570	*1	10.6	9270	945	84100	8570	*1	20 - 6205DB	- 165	B-112	B-129	B-148	
	11700	1190	104000	10600	*1		9670	985	104000	10600	*1	20 - 6215DA	- 165	B-112	B-129	B-148	
			104000	10600	0.80				104000	10600	0.80	20 - 6215DA	- 165	B-112	B-129	B-148	
			104000	10600	0.83				104000	10600	1.00	20 - 6215DB	- 165	B-113	B-129	B-149	
			122000	12500	0.98				116000	11800	1.19	20 - 6225DB	- 165	B-113	B-130	B-149	
			152000	15500	1.34				144000	14700	1.61	20 - 6235DA	- 165	B-114	B-114	B-150	
	14700	1500	170000	17400	1.69		12200	1240	161000	16400	1.69	20 - 6245DA	- 165	B-114	B-114	B-150	
			170000	17400	1.79				161000	16400	2.16	20 - 6245DB	- 165	B-114	B-114	B-150	
		209000	21300	2.12	197000	20100			2.12	20 - 6255DA	- 165	B-115	B-132	B-151			
		209000	21300	2.12	197000	20100			2.56	20 - 6255DB	- 165	B-115	B-132	B-151			
		254000	25900	2.98			241000	24500	3.38	20 - 6265DA	- 165	B-115	B-132	B-151			
7.44	12200	1240	104000	10600	*1	8.97	11400	1160	104000	10600	*1	20 - 6215DA	- 195	B-112	B-129	B-148	
	12500	1270	129000	13200	*1		11400	1160	122000	12500	*1	20 - 6225DA	- 195	B-113	B-113	B-149	
			128000	13100	0.84				122000	12400	1.01	20 - 6225DB	- 195	B-113	B-130	B-149	
			160000	16300	1.13				151000	15400	1.37	20 - 6235DA	- 195	B-114	B-114	B-150	
			179000	18200	1.51				169000	17200	1.59	20 - 6245DA	- 195	B-114	B-114	B-150	
	17300	1770	179000	18200	1.51		14400	1460	169000	17200	1.83	20 - 6245DB	- 195	B-114	B-114	B-150	
			219000	22300	1.80				207000	21100	2.12	20 - 6255DA	- 195	B-115	B-132	B-151	
			219000	22300	1.80				207000	21100	2.17	20 - 6255DB	- 195	B-115	B-132	B-151	
		267000	27200	2.52	253000	25800			3.04	20 - 6265DA	- 195	B-115	B-132	B-151			
6.28	14800	1510	137000	14000	*1	7.58	13500	1380	130000	13200	*1	20 - 6225DA	- 231	B-113	B-113	B-149	
			171000	17400	0.92				162000	16500	1.11	20 - 6235DA	- 231	B-114	B-114	B-150	
	20500	2090	190000	19400	1.26		17000	1730	180000	18400	1.52	20 - 6245DA	- 231	B-114	B-114	B-150	
			232000	23700	1.51				220000	22400	1.82	20 - 6255DA	- 231	B-115	B-132	B-151	
			276000	28100	2.24				269000	27400	2.70	20 - 6265DA	- 231	B-115	B-132	B-151	
5.31	18900	1930	179000	18200	*1	6.41	18900	1930	170000	17300	*1	20 - 6235DA	- 273	B-114	B-114	B-150	
			<b>200000</b>	<b>20300</b>	<b>1.06</b>				<b>189000</b>	<b>19300</b>	<b>1.28</b>	<b>20 - 6245DA</b>	<b>- 273</b>	<b>B-114</b>	<b>B-114</b>	<b>B-150</b>	
	24300	2470	244000	24900	1.28		20100	2050	231000	23500	1.54	20 - 6255DA	- 273	B-115	B-132	B-151	
			276000	28100	1.90				276000	28100	2.29	20 - 6265DA	- 273	B-115	B-132	B-151	
4.55	18900	1930	179000	18200	*1	5.49	18900	1930	177000	18100	*1	20 - 6235DA	- 319	B-114	B-114	B-150	
			208000	21200	0.91				197000	20100	1.10	20 - 6245DA	- 319	B-114	B-114	B-150	
	28400	2890	256000	26100	1.14		23500	2400	243000	24800	1.38	20 - 6255DA	- 319	B-115	B-132	B-151	
			276000	28100	1.62				276000	28100	1.96	20 - 6265DA	- 319	B-115	B-132	B-151	
		248000	25300	2.40	248000	25300			2.90	20 - 6275DA	- 319	B-115	-	B-151			
3.85	25800	2630	208000	21200	*1	4.64	25800	2630	207000	21100	*1	20 - 6245DA	- 377	B-114	B-114	B-150	
			258000	26300	0.97				255000	26000	1.17	20 - 6255DA	- 377	B-115	B-132	B-151	
	33500	3420	276000	28100	1.37		27800	2830	276000	28100	1.66	20 - 6265DA	- 377	B-115	B-132	B-151	
			248000	25300	2.03				248000	25300	2.46	20 - 6275DA	- 377	B-115	-	B-151	
3.07	25800	2630	208000	21200	*1	3.70	25800	2630	208000	21200	*1	20 - 6245DA	- 473	B-114	B-114	B-150	
	34500	3520	258000	26300	*1		34500	3520	258000	26300	*1	20 - 6255DA	- 473	B-115	B-132	B-151	
			258000	26300	0.82				258000	26300	0.98	20 - 6255DA	- 473	B-115	B-132	B-151	
			258000	26300	0.82				258000	26300	0.98	20 - 6255DB	- 473	B-115	B-132	B-151	
	42100	4290	276000	28100	1.09		34800	3550	276000	28100	1.32	20 - 6265DA	- 473	B-115	B-132	B-151	
			248000	25300	1.62				248000	25300	1.96	20 - 6275DA	- 473	B-115	-	B-151	
2.59	34500	3520	258000	26300	*1	3.13	34500	3520	258000	26300	*1	20 - 6255DA	- 559	B-115	B-132	B-151	
			276000	28100	0.93				276000	28100	1.12	20 - 6265DA	- 559	B-115	B-132	B-151	
	49700	5070	248000	25300	1.37		41200	4200	248000	25300	1.66	20 - 6275DA	- 559	B-115	-	B-151	
2.23	46000	4690	276000	28100	*1	2.70	46000	4690	276000	28100	*1	20 - 6265DA	- 649	B-115	B-132	B-151	
	57700	5880	276000	28100	0.80		47800	4870	276000	28100	0.96	20 - 6265DA	- 649	B-115	B-132	B-151	
		248000	25300	1.18					248000	25300	1.43	20 - 6275DA	- 649	B-115	-	B-151	
1.98	46000	4690	276000	28100	*1	2.39	46000	4690	276000	28100	*1	20 - 6265DA	- 731	B-115	B-132	B-151	
	65000	6630	<b>248000</b>	<b>25300</b>	<b>1.05</b>		53900	5490	<b>248000</b>	<b>25300</b>	<b>1.27</b>	<b>20 - 6275DA</b>	<b>- 731</b>	<b>B-115</b>	-	<b>B-151</b>	
1.72	46000	4690	276000	28100	*1	2.08	46000	4690	276000	28100	*1	20 - 6265DA	- 841	B-115	B-132	B-151	
	74800	7620	248000	25300	0.91		62000	6320	248000	25300	1.10	20 - 6275DA	- 841	B-115	-	B-151	
1.45	68200	6950	248000	25300	*1	1.74	68200	6950	248000	25300	*1	20 - 6275DA	- 1003	B-115	-	B-151	
1.16	68200	6950	248000	25300	*1	1.40	68200	6950	248000	25300	*1	20 - 6275DA	- 1247	B-115	-	B-151	

Selection Tables 15 kW

GEARMOTORS

- "\*2" indicate models manufactured with reducer and motor separately mounted on a common baseplate (horizontal shaft direction) or on an adaptor (vertical shaft direction). Consult us for details, including dimensions.
- Allowable radial load (Pro) is the value at the midpoint of the slow speed shaft.
- "\*3" indicate models with reduction ratios equal to nominal ratio. Refer to Table A-3 "6000SK Series (Actual Reduction Ratio)" on page A-4 for actual reduction ratio. Indicated reduction ratio is the same as actual reduction ratio for other models.
- Maintain torque load during operation within "Output torque" in the table for models with "\*1" in the SF column. They cannot be operated with 100% motor rating.